



# Bronto Skylift S-XDT







WÄRTSILÄ

52

PORTALI



# Up for the challenge

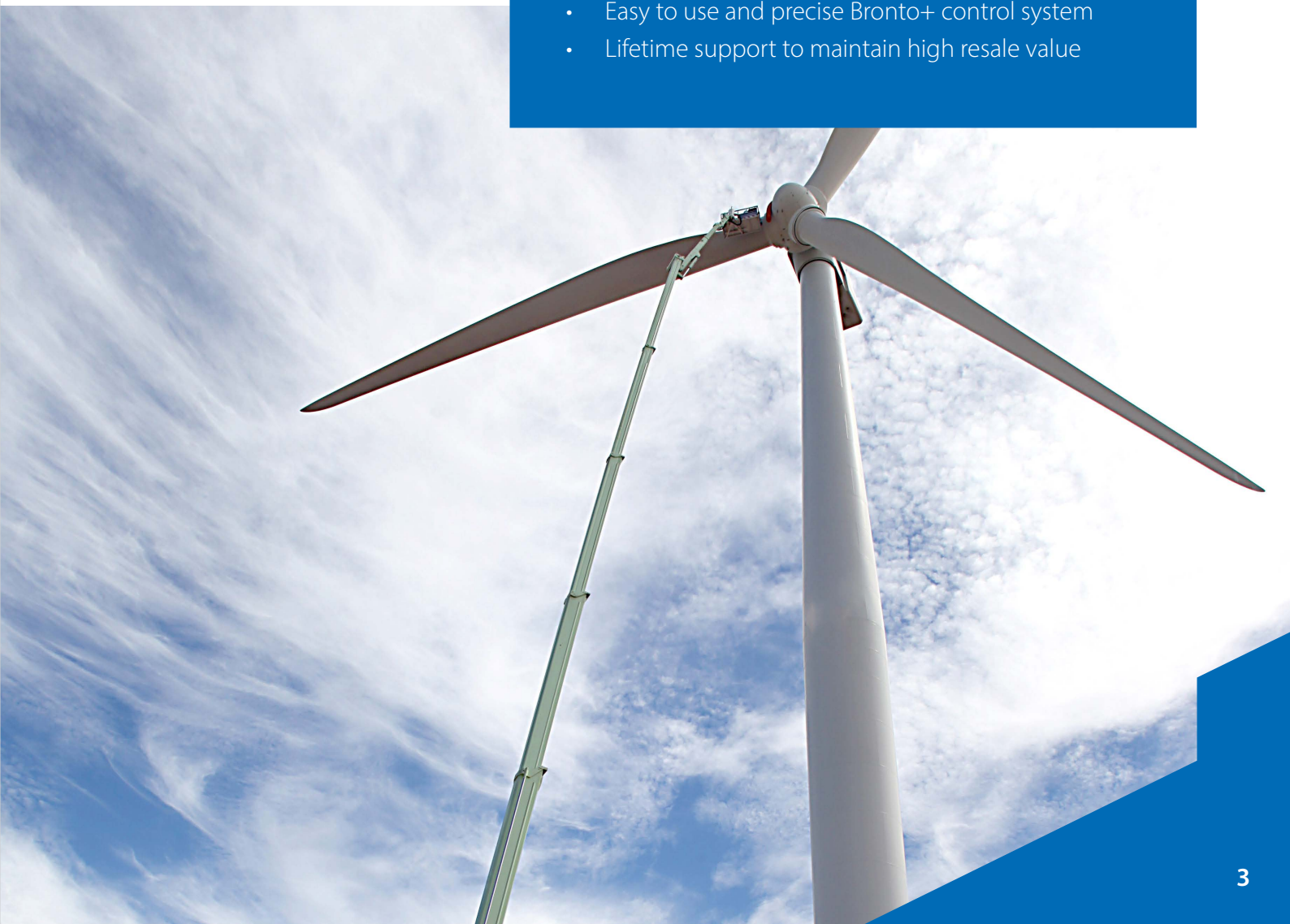
We are always aiming higher in our mission to provide the best solution for professionals working at height. The XDT has all the key features required from a perfect aerial work platform.

These units have a telescopic cage boom, increased working load and compact design to make the work at heights more efficient and much easier, while the Bronto + control system keeps you safe and lets you focus on the job.

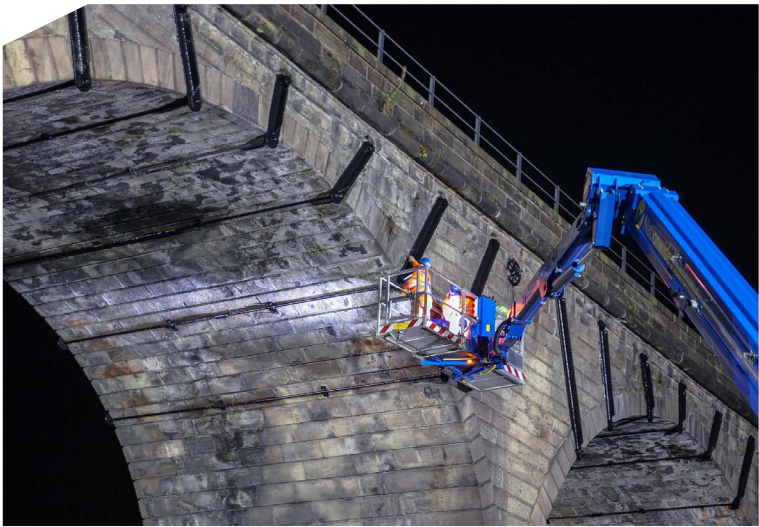
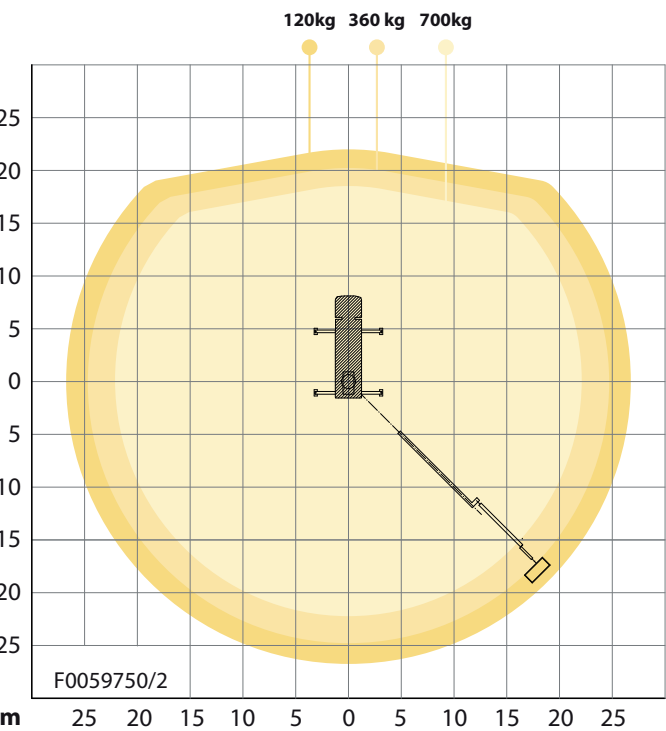
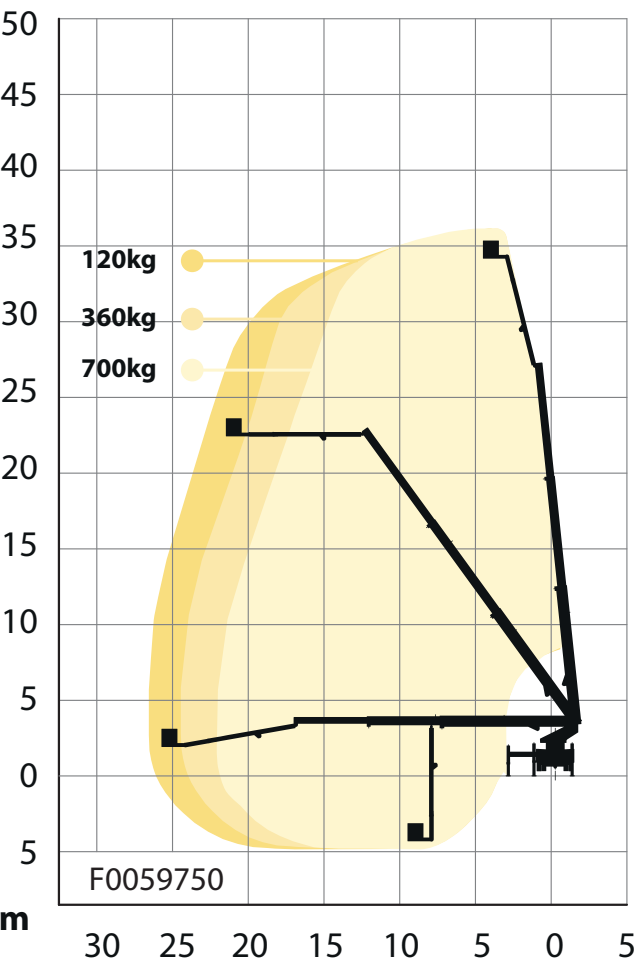
It's not only how high you can go with an aerial, but also how safely you do it. As always, your safety is our top priority. With our work platforms you can get where you need to be, and return home safely.

## XDT key features

- Working height from 36 to 78 metres
- Working outreach up to 38 metres
- Maximum cage load of 700 kg
- Easy to use and precise Bronto+ control system
- Lifetime support to maintain high resale value



# S36XDT



36 m

2 x 90°

27 m

2 x 280°

34 m

3.7 m \*

700 kg

<10 m \*

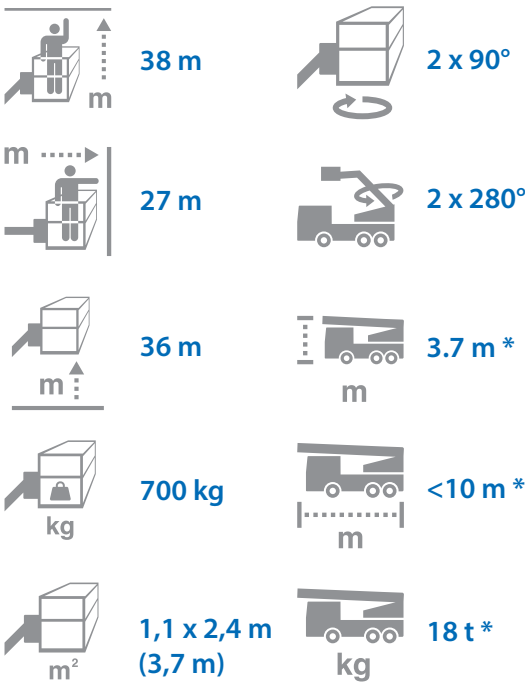
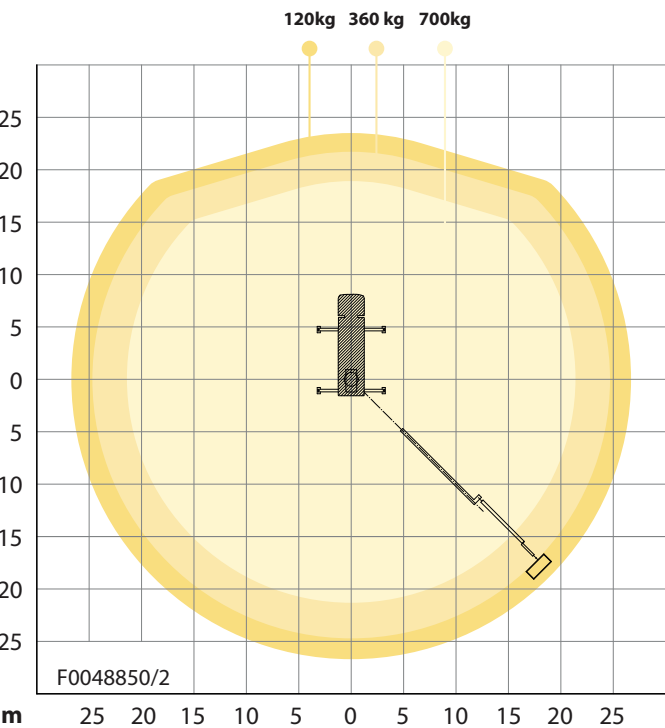
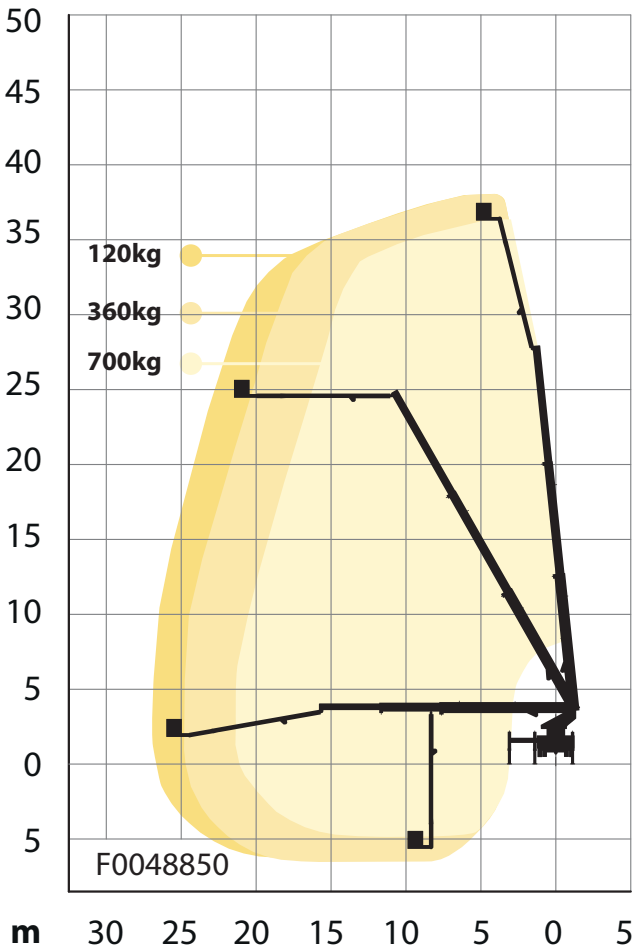
1,1 x 2,4 m (3,7 m)

18 t \*

\* depending on chassis  
Diagrams presented with standard configuration. Variations apply.

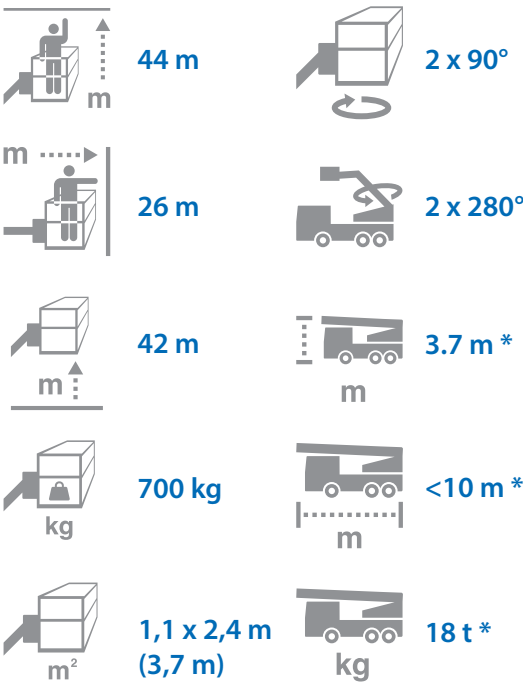
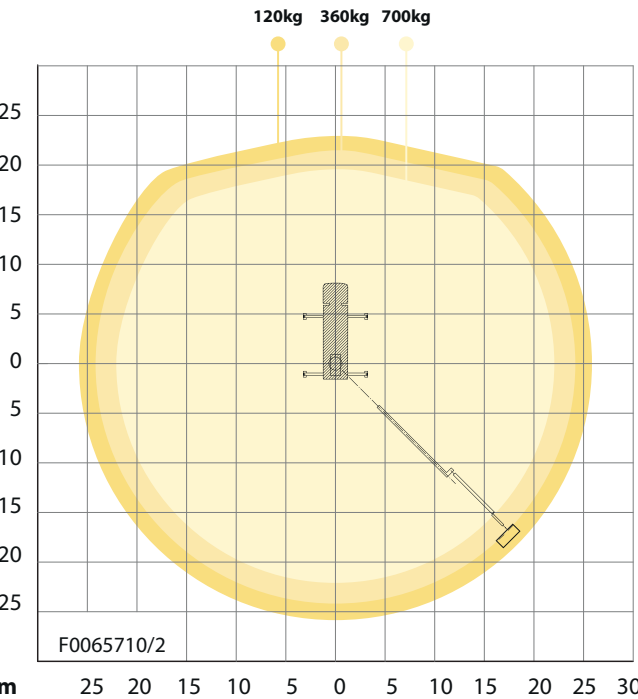
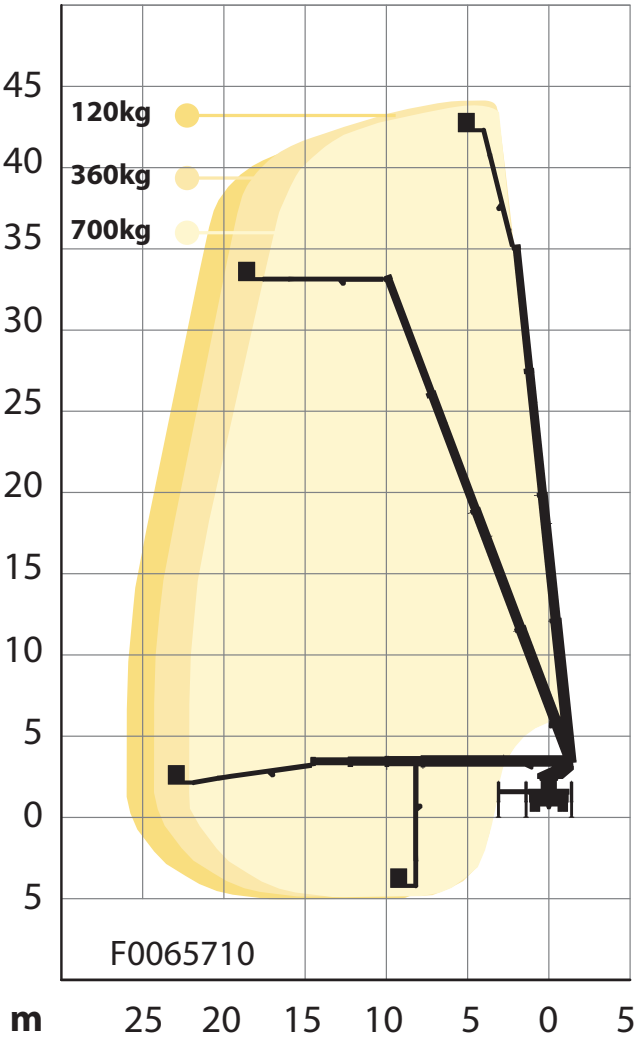


# S38XDT



\* depending on chassis  
Diagrams presented with standard configuration. Variations apply.

# S44XDT

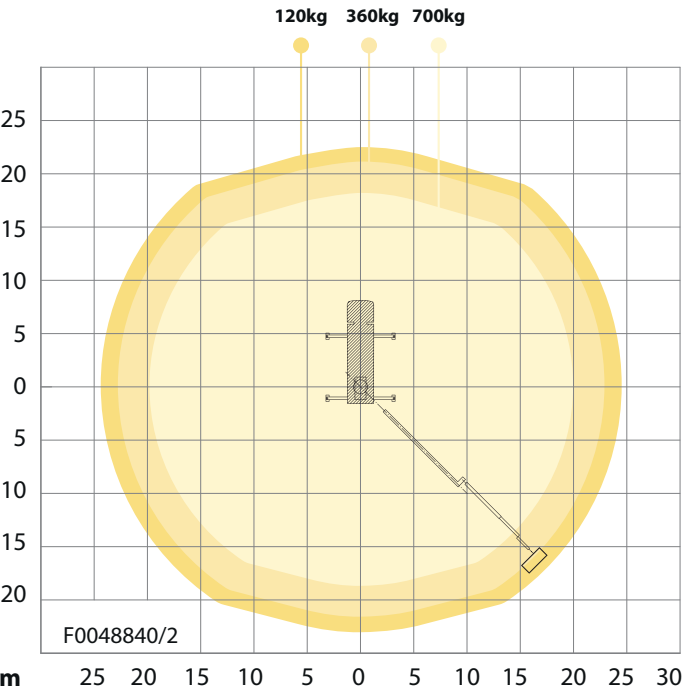
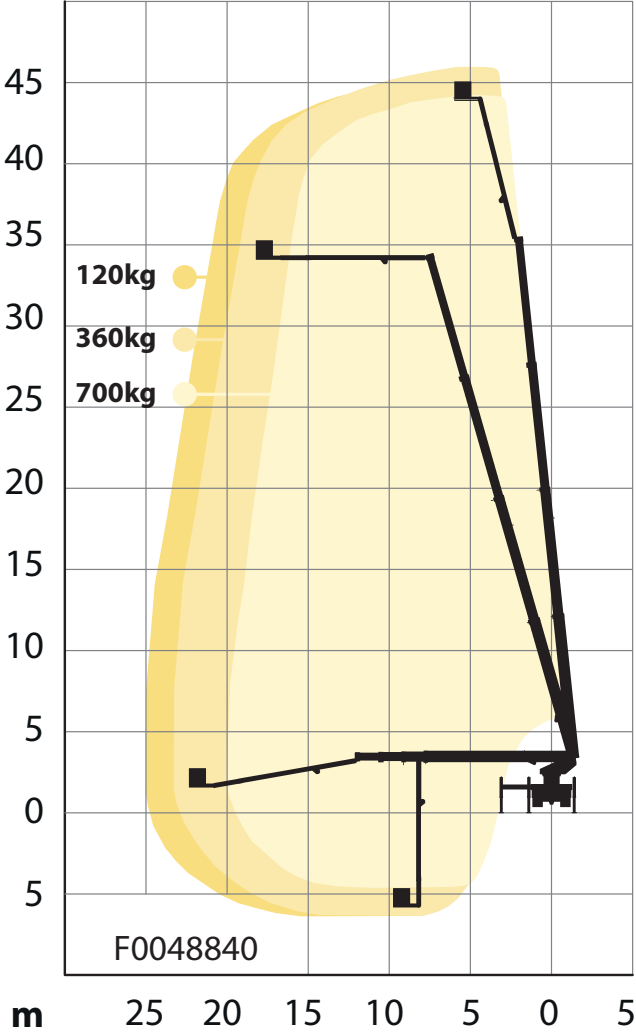



\* depending on chassis

Diagrams presented with standard configuration. Variations apply.



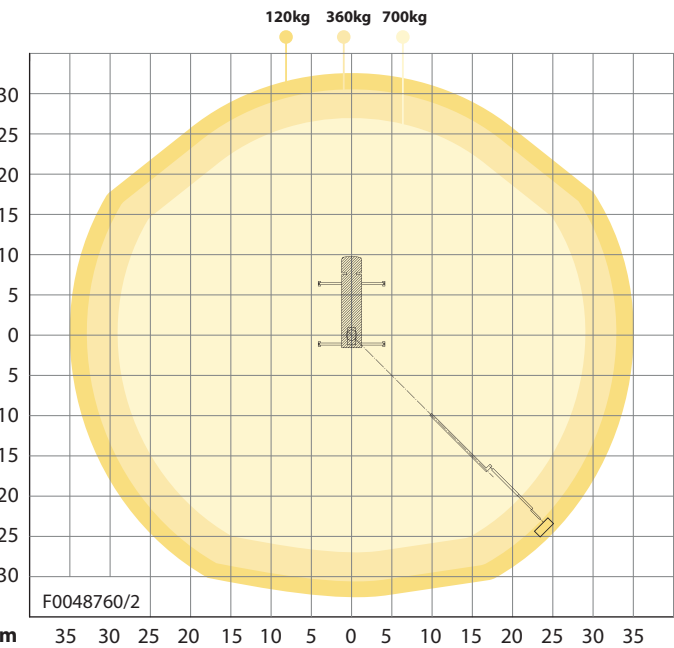
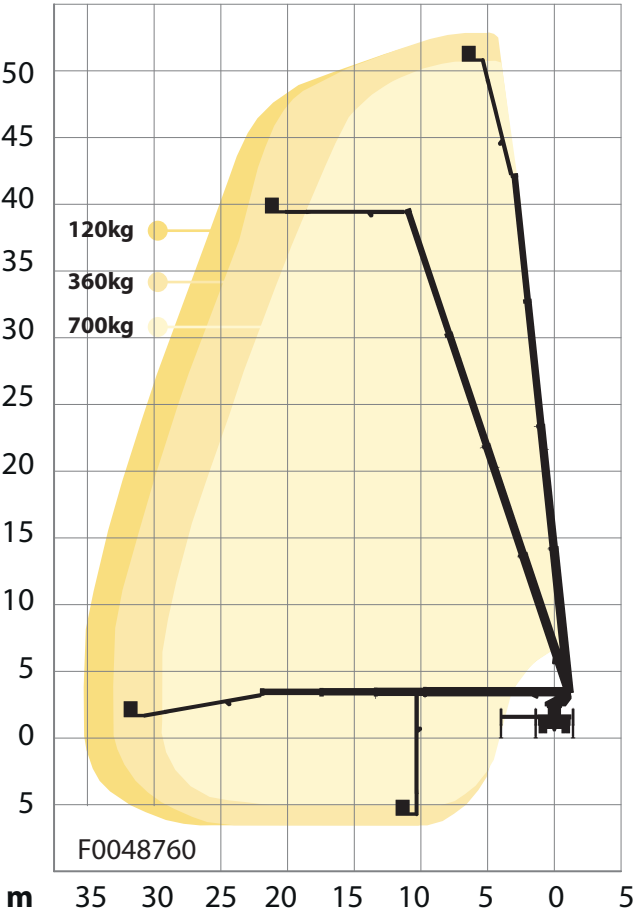
# S46XDT



	46 m		2 x 90°
	25 m		2 x 280°
	44 m		3.7 m *
	700 kg		<10 m *
	1,1 x 2,4 m (3,7 m)		18 t *

\* depending on chassis  
Diagrams presented with standard configuration. Variations apply.

# S53XDT

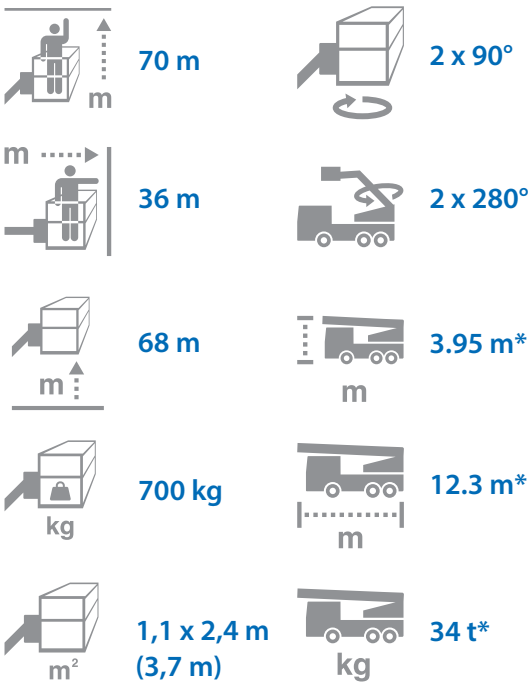
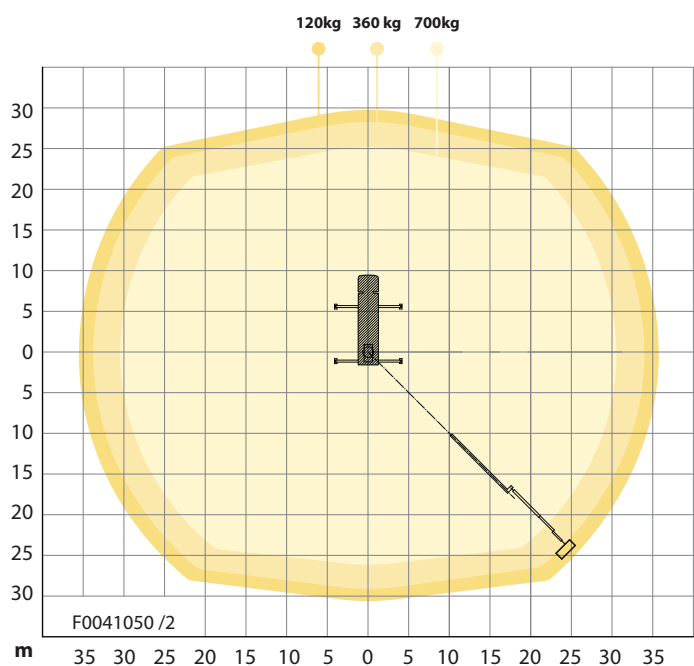
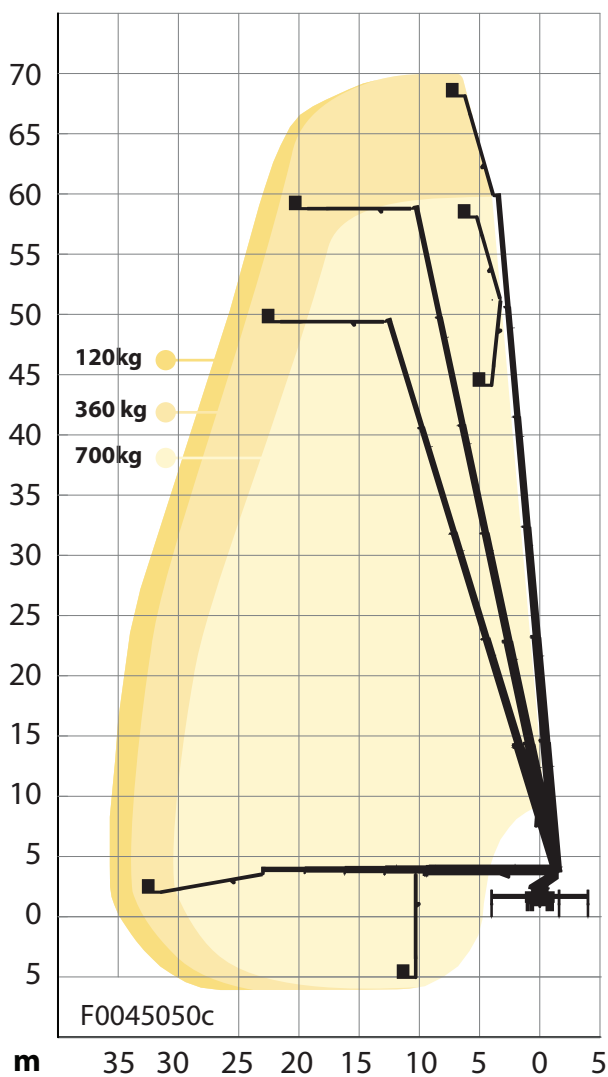


 <b>53 m</b>	 <b>2 x 90°</b>
 <b>35 m</b>	 <b>2 x 280°</b>
 <b>51 m</b>	 <b>3.8 m*</b>
 <b>700 kg</b>	 <b>11.9 m*</b>
 <b>1,1 x 2,4 m (3,7 m)</b>	 <b>26 t</b>

\* depending on chassis  
Diagrams presented with standard configuration. Variations apply.



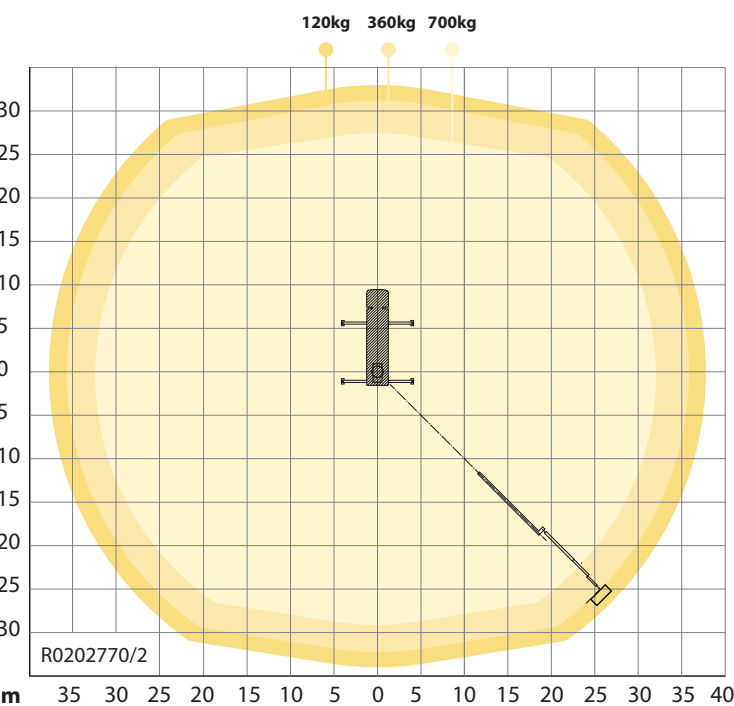
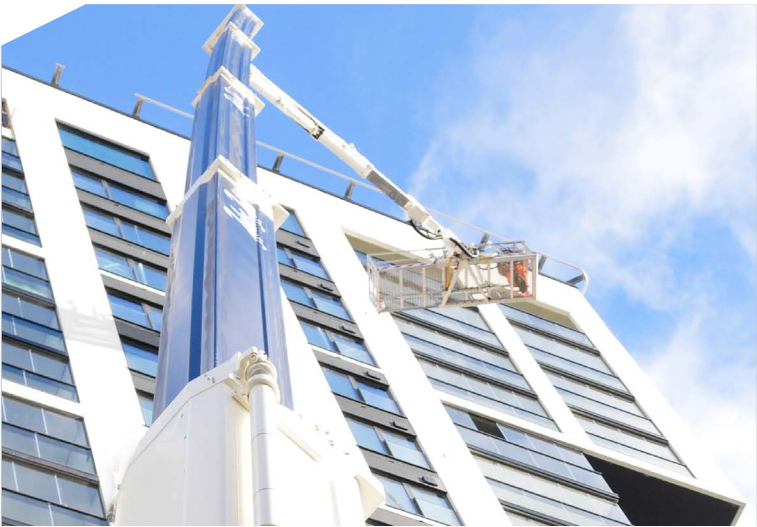
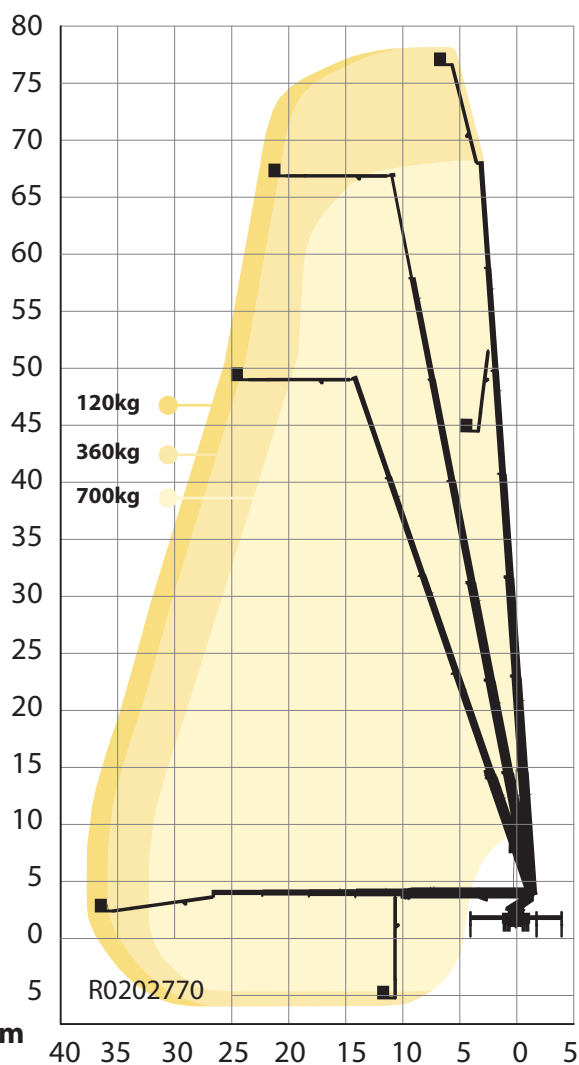
# S70XDT



\* depending on chassis  
Diagrams presented with standard configuration. Variations apply.



# S78XDT



 78 m	 2 x 90°
 38 m	 2 x 280°
 76 m	 4.3 m*
 700 kg	 13 m*
 1,1 x 2,4 m (3,7 m)	 41 t*

\* depending on chassis  
Diagrams presented with standard configuration. Variations apply.







Standard  
Available  
Not available

OPTIONS, SIMPLIFIED SELECTION	S XR	S XDT	S HLA	S EM
<b>DECKING AND STEPS</b>				
Aluminium sides on the decking				
Additional sidelights (Sidelights R48 ECE as std)				
Recessed foldable step, left/right				
Pull out step for rear of the platform, left/right				
Ladder type step with railings, left/right				
<b>LOCKERS AND SIDEPANELS</b>				
Complete locker for outrigger controls				
Tool box below decking				
Aluminum lockers with roller shutters				
Timber rack, mounted below decking				
<b>GROUND PADS AND BRACKETS</b>				
4 ground pads with aluminium brackets				
Conductive ground pads				
4 round ground pads insted of std pads				
<b>JACKING SYSTEM</b>				
Automatic, fully variable jacking				
Bronto Loadman for measuring the bearing capacity of ground				
Radio remote control for outriggers				
<b>BACK-UP SYSTEMS FOR HYDRAULICS</b>				
Petrol emergency back-up system by Kohler engine				
Petrol emergency back-up system by Kohler engine, electric start				
Diesel emergency back-up system by HATZ 1D81C silenced, electric start/stop				
Electric emergency back-up system by a battery pump				
Electric motor drive for the hydraulics				
<b>MAIN DRIVE ENGINES</b>				
Hydraulic pump driven by chassis' PTO				
Diesel engine HATZ 4H50TIC Semi-Silent				
<b>POWER/AIR/WATER SUPPLY AND OUTLETS</b>				
Electricity between turntable and cage, different voltages available				
Air/water supply between the turntable and cage				
Hydraulic outlets in the cage				
Hydraulic outlets and pressure intensifiers				
<b>INTERCOM AND RADIO</b>				
Intercom between the cage and ground control station				
<b>GENERATORS</b>				
Hydraulic generator with different power outputs				
<b>CAGES AND ACCESSORIES</b>				
Tree cutter fence for the cage				
Finger protection railing				
Ultra sonic collision guard with four sensors				
Cage rotation $\pm 220^\circ$ (S47XR only with std rotation $\pm 90^\circ$ )				
Safety harness attachment points (4pc) according to EN795				
Working cage 1,05 x 2,4 x 1,1 m, SWL 700 kg				
Extendable working cage 1,05 x 2,4 (-3,7) x 1,1 m, SWL 600kg				
Rotating camera cage				
Extendable working cage 0,9 x 2,4 (-3,4) x 1,1 m, SWL 350kg				
Working cage 0,9 x 2,04 x 1,1 m, SWL 500 kg				
Wide working cage 0,9 x 2,40 x 1,1 m, SWL 450 kg				
Lighting rig, SWL 300 kg				
RF Antenna rig, width 5,7 m, SWL 50kg				
Cage floor heating				
Working cage extension module, 1,0 m, capacity 100kg				
<b>MATERIAL HANDLING</b>				
Detachable winch in the working cage, SWL 400 kg, 2 fold out feet for the load (200kg/each)				
Element lifting system, capacity 150 kg.				
Master section lifter, capacity 150 kg				
Boom winch at the end of the 1st boom, SWL 1300 kg (hoist not included)				
Boom winch at the end of the 1st boom, SWL 1100 kg (hoist not included)				
Intelligent lifting eye mounted on to the last section of the main boom, max. load 2200 kg				
<b>TURNTABLE CONTROL STATION</b>				
Full lower control station at the turntable				
<b>BRONTO+ CONTROL SYSTEM</b>				
Engine information and warnings on display				
Telecontrol or Compass remote connection (for warranty period, optional after that)				
Memory function, height and outreach limitations and different user profiles				
Wireless remote control for boom movements				
Service counter and reminders				
Continuous rotation 360°				
High Voltage detector				
<b>BEACONS AND LIGHTS</b>				
Various LED warning beacons and flashing lights				
Various working lights 24V				
<b>CHASSIS</b>				
Reversing camera with 7" color display in the cabin				
Battery charger (DEFA) 2x20A, suitable for battery sizes up to 500Ah				
<b>MISCELLANEOUS</b>				
Safety Rail System, one rail on one side, without harness or self-retracting reel				





## Added safety and efficiency

High safety does not decrease the efficiency, it does the opposite.

### Control system for added safety and ease

Safety is about creating a safer working environment. An advanced control system increases the safety on your worksites by letting you focus on the job at hand.

The unit includes a 5th-generation Bronto+ control system that provides precise and stable movements. It has a resistive touch screen and is very simple and smooth to operate.

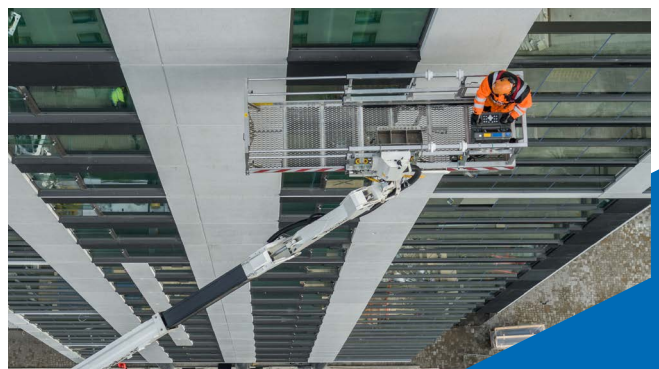
For added safety, the cage control centre has also a crushing hazard protection for the operator.

### Easy and flexible user interface

Navigation through the control system has never been easier. The main menu has all the features and it can be modified by adding or removing icons much like in a smartphone.

Other features making day-to-day working easier include contextual help texts, integrated quick manuals, more detailed failure codes, simplified access to the cage load and easy control of the working lights.

Even the remote control has gone online and can now be equipped with an additional display with all the functions.







## It's all about the uptime

With the Bronto Skylift service tools you can maximise your uptime and reduce maintenance cost.

### We back you up

We want to keep your machines running with the best possible rate and keep their residual value. That's why we back you up from the first day through out the life cycle of your platform. When buying a new Bronto Skylift unit, you can trust that its spare parts are available for at least the next 25 years.

With the comprehensive training and service selection you can rest assured that your platforms are running at the best possible rate and keeping their residual value when it's time to renew your fleet. Widest service network in the industry keeps you backed up wherever you are.

### Service agreements

With Bronto Service agreement, you can be assured that your Bronto equipment is kept in the best possible shape for its entire lifecycle. The content of our mutual agreement is fully customised according to your needs and wishes.

This covers the annual inspections and service visits, but it can also be expanded to include other services such as more detailed inspections, other maintenance activities, and spare parts.





# Advanced IoT for steady performance

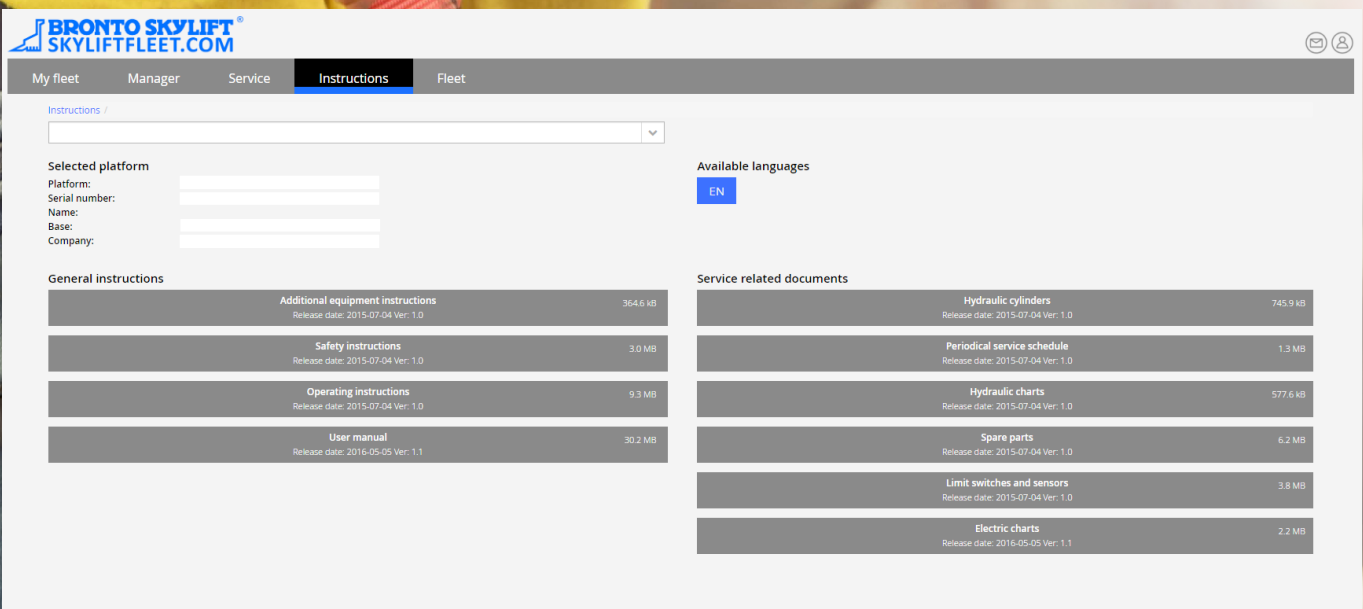
Connection between the platform and the database enables smooth, transparent communication.

## Skyliftfleet - manage your platforms

Skyliftfleet is a web-based portal and all important manuals, information and, for example, service bulletins are stored here for easy access. There are different sections for different needs and it's possible to select different views for different people or organisations.

## Bronto Compass

Bronto Skylift Service personnel can open a remote connection to the platform with Bronto Compass. It enables real time communication with the machine for various settings, calibration, analysing and fault finding. With this tool, faults and their causes can be rapidly identified, analysed and corrected, which reduces downtime and unnecessary costs.



**BRONTO SKYLIFT® SKYLIFTFLEET.COM**

My fleet Manager Service **Instructions** Fleet

Instructions /

Selected platform

Platform:

Serial number:

Name:

Base:

Company:

Available languages

EN

**General instructions**

Additional equipment instructions Release date: 2015-07-04 Ver: 1.0	364.6 kB
Safety instructions Release date: 2015-07-04 Ver: 1.0	3.0 MB
Operating instructions Release date: 2015-07-04 Ver: 1.0	9.3 MB
User manual Release date: 2016-05-05 Ver: 1.1	30.2 MB

**Service related documents**

Hydraulic cylinders Release date: 2015-07-04 Ver: 1.0	745.9 kB
Periodical service schedule Release date: 2015-07-04 Ver: 1.0	1.3 MB
Hydraulic charts Release date: 2015-07-04 Ver: 1.0	577.6 kB
Spare parts Release date: 2015-07-04 Ver: 1.0	6.2 MB
Limit switches and sensors Release date: 2015-07-04 Ver: 1.0	3.8 MB
Electric charts Release date: 2016-05-05 Ver: 1.1	2.2 MB



Bronto Skylift is a trusted global supplier of truck-mounted hydraulic platforms. We design, manufacture, sell and service appliances for rescue and firefighting, as well as for industrial access.

Our product range includes approximately 50 models with a range of 17 to 112 metres of working height. The advanced modularity also allows for numerous client-specific modifications. During the past 50 years, we have delivered over 7,000 platform units to fire brigades and industrial customers throughout all the continents in more than 120 countries.

Our headquarters and production plants are situated in Finland. We also have subsidiaries in Germany, Sweden, Switzerland and the US. The company is part of the Japan-based Morita Holdings Corporation.

[sales@brontoskylift.com](mailto:sales@brontoskylift.com)

Technical data and illustrations subject to change without notice.

[www.brontoskylift.com](http://www.brontoskylift.com)